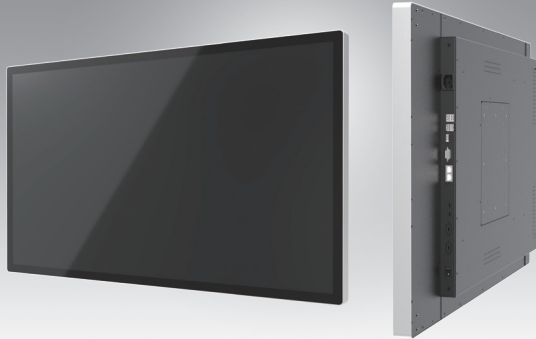


UTC-542

42.6" Ubiquitous Touch Computer UTC-542D with Intel® Baytrail J1900* UTC-542F with Intel® Skylake i5 6300U

NEW



Features

- Low Power, High Performance, Aluminum Fanless Design
- Built-in Intel® Baytrail J1900 (UTC-542D)
- Built-in Intel® Skylake i5 6300U (UTC-542F)
- Provide natural viewing experience with 42.6" 16:9 display
- Front panel complies with IP65 protection standard
- Landscape & Portrait screen mode support by different applications
- Attachable integrated peripherals to extend functions and applications
- Dual hot-swappable HDD/SSD slots with RAID 0/1 support
- Optional mirror coating to support smart mirror applications



Introduction

UTC-542 features an extra slim border all-in-one computing system equipped with wide format, touch based and mirror coating LCD panel. It is easy to integrate key peripherals for diversified self-service and interactive signage deploy in different application areas. The systems deliver updated information with well-designed interactive interfaces, fully ensure relevant content and targeted promotions are delivered. UTC series touch panel computers are the best investments to enhance user satisfaction, further brand equity, and maximize business profits.

Specifications

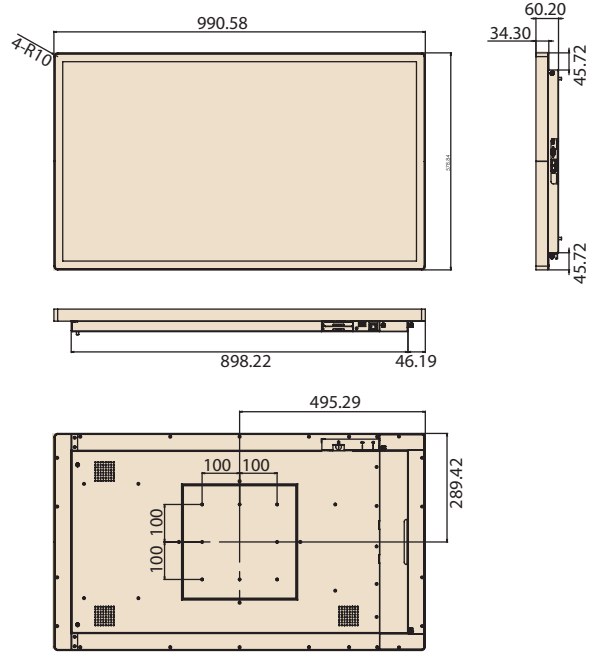
| | | | | |
|------------------------------|---|--|--|------------------------------|
| Processor System | CPU | Intel® Celeron® J1900 (UTC-542D) | Intel® Core™ i7-6600U (Available)* Intel® Core™ i5-6300U (UTC-542F) Intel® Core™ i3-6100U (Available)* | |
| | Base Frequency | 2 GHz (Quad-Core) | 2.4 GHz (Dual-Core) | |
| | Cache | 2 MB | 3 MB | |
| | Memory | 1 x SO-DIMM DDR3L 1333 MHz up to 8 GB | 2 x SO-DIMM DDR3L 1600MHz up to 16G | |
| | HDD/SSD | Dual hot-swappable HDD/SSD slots with RAID 0,1 support | | |
| | Network (LAN) | 2 x Gigabit Ethernet ports | | |
| | I/O Ports | 2 x RS-232 COM (RS-422/485)* | | 2 x RS-232 COM (RS-422/485)* |
| | | 3 x USB 2.0 / 1 x USB 3.0 | | 2 x USB 2.0 / 2 x USB 3.0 |
| | | 2 x Gigabit Ethernet (RJ-45) | | 2 x Gigabit Ethernet (RJ-45) |
| | | 1 x VGA | | 1 x VGA |
| | 1 x HDMI | | 1 x HDMI | |
| Stereo Speaker | 10 W x 2 | | | |
| Bus expansion | Full-size MiniPCIe/mSATA | | | |
| Dimensions (W x H x D) | 990.6 x 578.8 x 60.2mm (Mirror Glass) 1016.9 x 605.2 x 60.5mm (Pcap / Mirror Pcap*) | | | |
| Weight | 24.6 kg | | | |
| OS Support | Windows Embedded 7, Windows Embedded 8, Window 10 IoT Enterprise, Linux Ubuntu 14.04, Android 4.4.2** | | | |
| Environmental Specifications | Operating Temperature | 0 ~ 40° C (32 ~ 104° F) | | |
| | Relative Humidity | 10 ~ 95% @ 40° C non-condensing | | |
| | Vibration | 0.5G | | |
| | Shock | 5 G peak acceleration (11 msec. duration) | | |
| | Front Panel Protection | IP65/ NEMA4 Compliant | | |
| Power | Input Rating | 100-240V _{AC} ~ 50/60Hz 3.7A | | |
| LCD Display | Size/Type | 42.6" TFT LCD with LED backlight | | |
| | Max.Resolution | 1920 x 1080 | | |
| | Pixel Pitch (mm) | 0.49 (H) x 0.49 (W) | | |
| | Brightness (cd/m ²) | 450 nits | | |
| | View Angle | Horizontal: ±89° or 178° total / Vertical: ±89° or 178° total | | |
| Touch Screen Option (PE/GE) | Type | Projected Capacitive Touch Panel / Mirror Glass Panel (No touch function) / Mirror Projected Capacitive Touch Panel* | | |
| | Light Transmission | >90% (Pure Glass); >25% (Mirror Coating) | | |
| | Controller | USB Interface | | |

* Mirror PCap by project request.

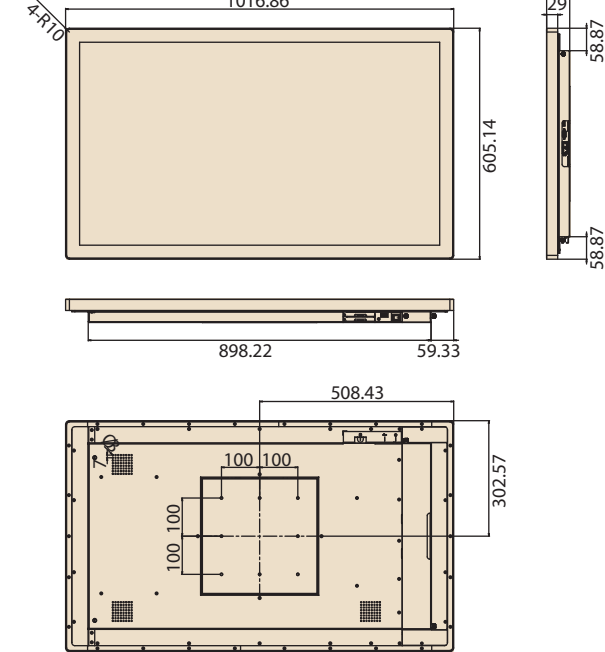
** Only UTC-542D to support Android OS.

Dimensions

Mirror



Pcap/ Mirror Pcap

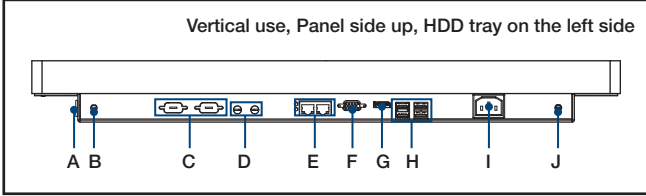


Unit: mm

Ordering Information

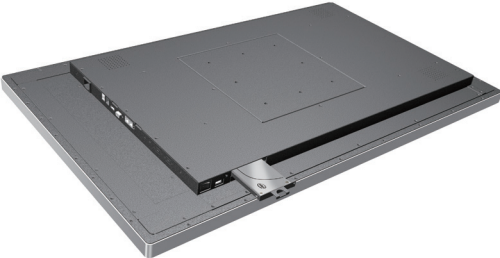
| Part No. | Description |
|-----------------|--|
| UTC-542DM-ATB0E | 42.6", Intel Baytrail J1900, Mirror Glass, 4GB RAM |
| UTC-542FM-ATB0E | 42.6", Intel Skylake Corei5-6300U, Mirror Glass, 4GB RAM |
| UTC-542DP-ATB0E | 42.6", Intel Baytrail J1900, Pcap Touch, 4GB RAM |
| UTC-542FP-ATB0E | 42.6", Intel Skylake Corei5-6300U, Pcap Touch, 4GB RAM |
| 1702002605 | Power cord 2P FRANCE 10A/16A 220V 1.83M 90D |
| 1702002600 | Power Cord 3P UL/CSA(USA) 125V 10A 1.83M 180D |
| 1700000596 | Power Cord (China) CCC, 10A 250V, 3P 1830mm |
| 1700018704 | Power Cord UK BSI 2P 10A 250V 180cm 18AWG |

Fully- Integrated I/O



- A. Power Switch
- B. Antenna Port
- C. COM x 2
- D. Mic-in/ Line-out
- E. LAN x 2
- F. VGA
- G. HDMI
- H. USB 3.0 x 1, USB 2.0 x 3 (Baytrail)
USB 3.0 x 2, USB 2.0 x 2 (Skylake)
- I. AC Power
- J. Antenna Port

Easy Swappable HDD/SDD Slot



Peripherals for UTC-542 series

| Part No. | Description |
|---------------|--|
| UTC-542P-R01E | RFID Reader For UTC-542 (USB connection) |
| UTC-542P-B01E | 1D Barcode Scanner for UTC-542 (USB connection) |
| UTC-542P-B02E | 2D Barcode Scanner for UTC-542 (USB connection) |
| UTC-542P-M01E | Magnet Strip Reader For UTC-542 (USB connection) |

Installation Accessory

| Part No. | Description |
|------------------|-------------------------|
| UTC-WALL-MOUNT2E | VESA Mount 200 x 200 mm |